



BY **PIHER**

**MULTI-PROPS**

# WEIGHT CAPACITIES

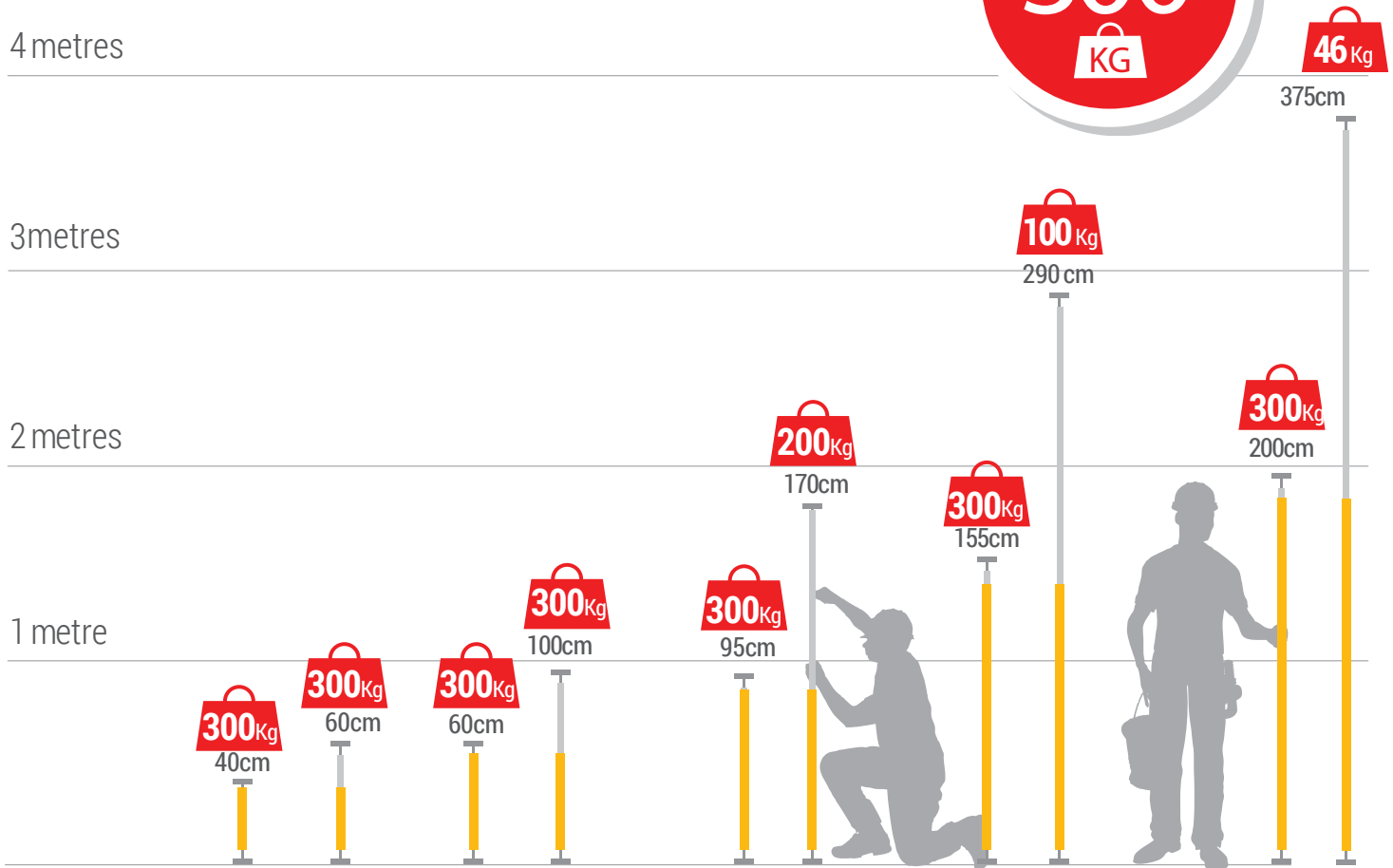


4 metres

3 metres

2 metres

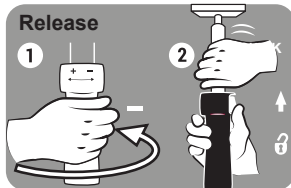
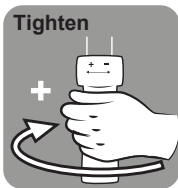
1 metre



Size

Weight

## HOW TO USE



<b>GOR-MP-040</b>	40-60cm	1.1kg
<b>GOR-MP-060</b>	60-100cm	1.36kg
<b>GOR-MP-095</b>	95-170cm	1.81kg
<b>GOR-MP-155</b>	155-290cm	2.61kg
<b>GOR-MP-200</b>	200-375cm	3.18kg

Working load limits (WLL's) are valid only when multi-props are set up and used correctly.

## MULTI-PROP ACCESSORIES

### Non-Slip Pad

Code: GOR-MP-PD35

The non-slip pad is an easy to install accessory that attaches to the rubber pads of Gorilla PIHER multi-prop.

*Features:*  
Compatible with all Gorilla PIHER multi-props  
Stainless steel springs  
Rubber anti-slip surface  
Pad size 6x35cm



### Multi-Prop Arm+

Code: GOR-MP-ARM

Simply unscrew the top pad from your Gorilla Multi-Prop and attach the ARM+ accessory for easy single hand adjustment.

*Features:*  
Compatible with all Gorilla PIHER multi-props  
100kg load capacity  
Provides an additional 18cm adjustment of your multi-prop

